



Product No. **55049**

IN 522

DIY 3 Door Dog Box

Tools Required

- 1/8" Drill Bit
- Tape Measure
- Phillip Screw Driver
- Circular Saw
- Tin Snips
- Drill

Hardware Included

- 1– Front Panel Assembly
- 2– Vent Assembly
- 6– Corner 46 1/2" Angles
- 2– Corner 25" Angles
- Screw Pack
-

*Owens recommends painting the box and applying silicon under aluminum parts.

* All wood is fastened together with 1 5/8" drywall screws-- NOT supplied.

* Pre-Drill holes in Aluminum.



Fig 1

1. Attach 2 pieces of 2"x2"x6" block to side panels. Position them flush with the edge, allowing 1 1/2" top & bottom clearance to allow for more block placement. (See Fig 1)

2. Attach back to side panels, keeping outside flush. (See Fig 1)

3. Notch the center dividers on the top edge 1 1/4" x 3" (See Fig 2)

Attach 2 pieces of 2"x2"x6" block on rear edge of divider panels. (Note photo only shows 1 divider) spacing on dividers will be approximately 14 11/16"

4. Attach 2"x2"x6" blocks evenly spaced on side, back and divider panels. Attach 2"x2"x20" blocks to front edge of the side panels. (See Fig 4)(Note photo only shows 1 divider)

5. Attach top & bottom panels to sides, screwing into 2"x2" blocks. Attach a 2"x2"x6" block to the center of each door opening on top & bottom panels.



Fig 2



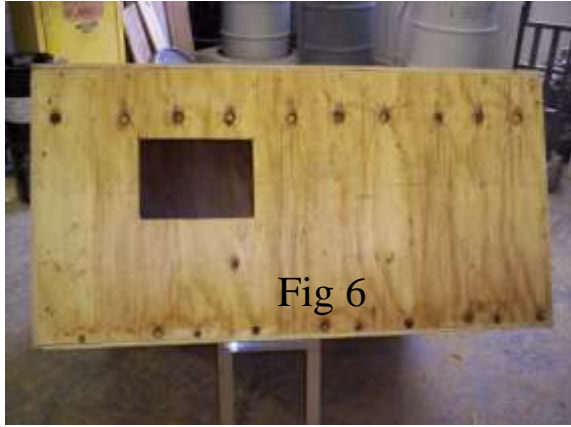
Fig 3



Fig 4

DIY 3 Door Dog Box

6. Mark a 7"x10" vent opening on sides. Cut out marked area for vent. (See Fig 6)



7. Attach one 2x2x6" block at rear of vent opening. And attach 2"x2"x6" block 1/2" forward of the rear block. Attach a 2"x2"x23" block along the top & bottom edge of vent opening. Do this on both side panels. (See Fig 7)



8. Remove doors from front assembly and attach front frame to box with supplied screws. Pre-drill 1/8" holes in aluminum for screws.

9. Attach long angles to sides of box pre-drill aluminum for screws supplied.



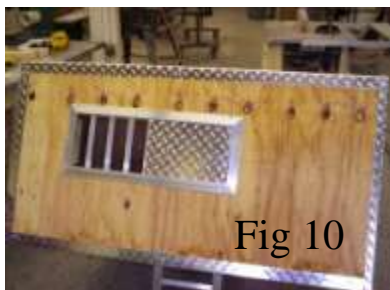
10. Notch and cut angles to length for top & bottom rear edges. Notch and cut using tin snips and attach to box pre-drill aluminum for supplied screws. (See Fig 8)

11. Cut rear shorter angles to length and attach to box pre-drilling aluminum for screws supplied. (See Fig 9)



12. Attach vent to sides using supplied screws. (See Fig 10)

13. Attach doors to front frame assembly with supplied screws. Do not use small screws previously removed. (See Fig 11)



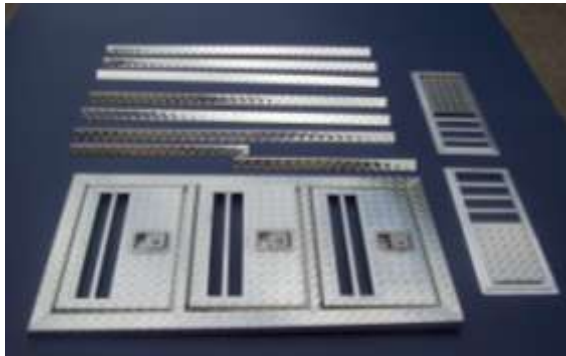


IN 522

Product No. 55049

DIY 3 Door Dog Box

Parts Supplied—Figure A

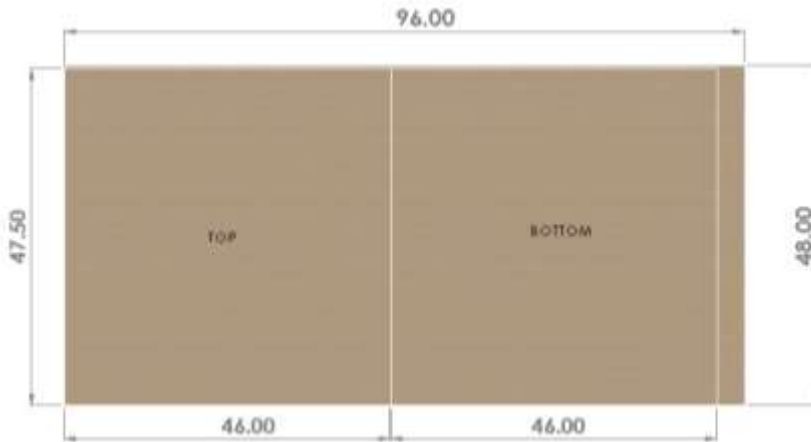


Materials Requires: - Not Supplied

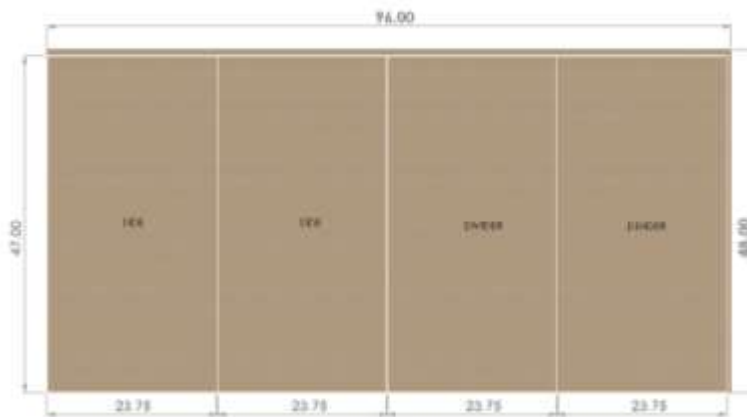
Qty	Material
2 1/2	4'x8'x1/2" Plywood
5	2"x2"x8'
1	Box of 1 5/8" Drywall screws
	Latex Paint
	Silicon Caulk

1. Cut Plywood according to Sheet Layout.
2. Cut 2"x2" into the following pieces:
 2 pieces 20" each
 2 pieces 23" each
 40 pieces 6" each

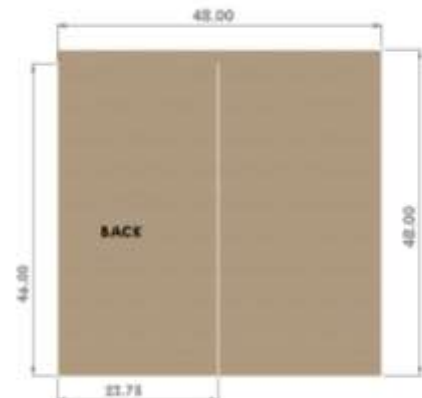
*This instruction sheet is intended as a guide only. Other materials and layout may be substituted.



Sheet Layout 1



Sheet Layout 2



Sheet Layout 3